



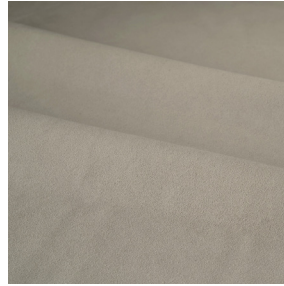
Bio-Vera Suede



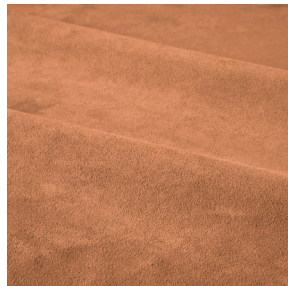
Pale white



Mouton



Earth



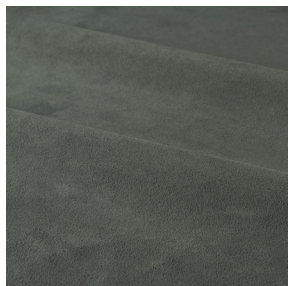
Fox



Caramel



Chocolate



Caribou



Ash



Black

SPECIFICATIONS

BALLY FLEX

>130,000
(Cycles ISO 5402-1:2011)

TEAR

77 N (MD), 86 N (CD)
(N ISO 3377-2:2016)

WATER VAPOR

5.9 - 6.6 mg / (cm² . h)
(ISO 14268:2012)

COLOUR FASTNESS

Value - 4
Value - 4
Value - 4-5
Value - 4-5
(ISO 17228:2015)

RESISTANCE TO UV LIGHT

Xenon 20/82 h: 3
Xenon 20/280 h: 3
(ISO 105-B02:2013)

TENSILE STRENGTH

36 MPa (ISO 3376:2020)

ESBECO

EST 1978